



Labour Force Survey Statistics January 2020

CALGARY CMA

Table 14-10-0294-02 (282-0135) Labour force survey estimates (LFS), by census metropolitan area based on 2011 census boundaries, 3-month moving average, seasonally adjusted, monthly (persons unless otherwise noted)							
	January 2019	December 2019	January 2020	# Change December 2019 - January 2020	% Change December 2019 - January 2020	# Change January 2019 - January 2020	% Change January 2019 - January 2020
Population (x 1,000)	1,257.4	1,286.0	1,288.2	2.2	0.2%	30.8	2.4%
Labour force (x 1,000)	912.3	934.3	927.0	-7.3	-0.8%	14.7	1.6%
Employment (x 1,000)	845.5	868.3	860.2	-8.1	-0.9%	14.7	1.7%
Unemployment (x 1,000)	66.8	66.0	66.8	0.8	1.2%	0.0	0.0%
Unemployment rate (rate)	7.3%	7.1%	7.2%	0.1%		-0.1%	
Participation rate (rate)	72.6%	72.7%	72.0%	-0.7%		-0.6%	
Employment rate (rate)	67.2%	67.5%	66.8%	-0.7%		-0.4%	

CALGARY CMA

Table 14-10-0095-01 (282-0128) Labour force survey estimates (LFS), by census metropolitan area based on 2011 census boundaries, 3-month moving average, unadjusted for seasonality, monthly (persons unless otherwise noted)							
	January 2019	December 2019	January 2020	# Change December 2019 - January 2020	% Change December 2019 - January 2020	# Change January 2019 - January 2020	% Change January 2019 - January 2020
Population (x 1,000)	1,257.4	1,286.0	1,288.2	2.2	0.2%	30.8	2.4%
Labour force (x 1,000)	908.4	929.6	921.0	-8.6	-0.9%	12.6	1.4%
Employment (x 1,000)	845.6	864.7	855.9	-8.8	-1.0%	10.3	1.2%
Full-time employment (x 1,000)	682.1	698.8	687.9	-10.9	-1.6%	5.8	0.9%
Part-time employment (x 1,000)	163.5	165.9	168.0	2.1	1.3%	4.5	2.8%
Unemployment (x 1,000)	62.8	64.9	65.1	0.2	0.3%	2.3	3.7%
Not in labour force (x 1,000)	349.0	356.4	367.3	10.9	3.1%	18.3	5.2%
Unemployment rate (rate)	6.9%	7.0%	7.1%	0.1%		0.2%	
Participation rate (rate)	72.2%	72.3%	71.5%	-0.8%		-0.7%	
Employment rate (rate)	67.2%	67.2%	66.4%	-0.8%		-0.8%	

CALGARY CMA

Table: 14-10-0097-01 (282-0130) Labour force survey estimates (LFS), employment by census metropolitan area based on 2011 census boundaries and North American Industry Classification System (NAICS), 3-month moving average, unadjusted for seasonality, monthly (persons x 1,000)

	January 2019	December 2019	January 2020	# Change December 2019 - January 2020	% Change December 2019 January 2020	# Change January 2019 - January 2020	% Change January 2019 - January 2020
Total Employed - All Industries	845.6	864.7	855.9	-8.8	-1.0%	10.3	1.2%
Goods-Producing Sector	185.2	174.1	171.1	-3.0	-1.7%	-14.1	-7.6%
Agriculture	3.0	5.6	4.8	-0.8	-14.3%	1.8	60.0%
Forestry, Fishing, Mining, Quarrying, Oil and Gas	52.1	50.2	52.6	2.4	4.8%	0.5	1.0%
Utilities	9.7	10.7	9.7	-1.0	-9.3%	0.0	0.0%
Construction	73.6	70.5	68.3	-2.2	-3.1%	-5.3	-7.2%
Manufacturing	46.7	37.1	35.7	-1.4	-3.8%	-11.0	-23.6%
Services-Producing Sector	660.4	690.6	684.8	-5.8	-0.8%	24.4	3.7%
Wholesale & Retail Trade	120.2	114.4	111.9	-2.5	-2.2%	-8.3	-6.9%
Transportation and Warehousing	55.1	60.0	60.5	0.5	0.8%	5.4	9.8%
Finance, Insurance, Real Estate and Leasing	39.1	39.2	38.3	-0.9	-2.3%	-0.8	-2.0%
Professional, Scientific and Technical Services	92.1	108.8	106.5	-2.3	-2.1%	14.4	15.6%
Business, Building and Other Support Services	38.3	31.8	29.9	-1.9	-6.0%	-8.4	-21.9%
Educational Services	54.1	68.0	68.9	0.9	1.3%	14.8	27.4%
Health Care and Social Assistance	102.0	115.0	117.2	2.2	1.9%	15.2	14.9%
Information, Culture and Recreation	39.7	31.5	32.0	0.5	1.6%	-7.7	-19.4%
Accommodation and Food Services	54.1	60.1	59.7	-0.4	-0.7%	5.6	10.4%
Other Services	40.2	32.4	31.5	-0.9	-2.8%	-8.7	-21.6%
Public Administration	25.7	29.4	28.5	-0.9	-3.1%	2.8	10.9%

Province of Alberta

Table: 14-10-0287-01 (282-0087) Labour force survey estimates (LFS), by sex and age group, seasonally adjusted, monthly (persons unless otherwise noted)

	January 2019	December 2019	January 2020	# Change December 2019 - January 2020	% Change December 2019 - January 2020	# Change January 2019 - January 2020	% Change January 2019 - January 2020
Population (x 1,000)	3,498.9	3,554.4	3,557.7	3.3	0.1%	58.8	1.7%
Labour force (x 1,000)	2,495.7	2,513.6	2,500.1	-13.5	-0.54%	4.4	0.2%
Employment (x 1,000)	2,326.4	2,337.4	2,318.5	-18.9	-0.8%	-7.9	-0.3%
Employment full-time (x 1,000)	1,904.4	1,898.6	1,895.0	-3.6	-0.2%	-9.4	-0.5%
Employment part-time (x 1,000)	422.0	438.7	423.5	-15.2	-3.5%	1.5	0.4%
Unemployment (x 1,000)	169.3	176.3	181.7	5.4	3.1%	12.4	7.3%
Unemployment rate (rate)	6.8%	7.0%	7.3%	0.3%		0.5%	
Participation rate (rate)	71.3%	70.7%	70.3%	-0.4%		-1.0%	
Employment rate (rate)	66.5%	65.8%	65.2%	-0.6%		-1.3%	

Province of Alberta

Table: 14-10-0355-01 (282-0088) Labour force survey estimates (LFS), employment by North American Industry Classification System (NAICS), seasonally adjusted, monthly (persons x 1,000)

	January 2019	December 2019	January 2020	# Change December 2019 - January 2020	% Change December 2019 - January 2020	# Change January 2019 - January 2020	% Change January 2019 - January 2020
Total Employed - All Industries	2,326.4	2,337.3	2,318.5	-18.8	-0.8%	-7.9	-0.3%
Goods-Producing Sector	591.9	577.5	577.2	-0.3	-0.1%	-14.7	-2.5%
Agriculture	45.7	49.6	50.6	1.0	2.0%	4.9	10.7%
Forestry, Fishing, Mining, Quarrying, Oil and Gas	149.5	136.1	140.3	4.2	3.1%	-9.2	-6.2%
Utilities	21.9	24.2	22.6	-1.6	-6.6%	0.7	3.2%
Construction	237.5	235.2	229.0	-6.2	-2.6%	-8.5	-3.6%
Manufacturing	137.4	132.4	134.7	2.3	1.7%	-2.7	-2.0%
Services-Producing Sector	1,734.5	1,759.8	1,741.3	-18.5	-1.1%	6.8	0.4%
Wholesale & Retail Trade	332.7	339.6	330.6	-9.0	-2.7%	-2.1	-0.6%
Transportation and Warehousing	134.4	132.3	128.4	-3.9	-2.9%	-6.0	-4.5%
Finance, Insurance, Real Estate and Leasing	105.0	108.8	107.8	-1.0	-0.9%	2.8	2.7%
Professional, Scientific and Technical Services	177.4	192.6	190.7	-1.9	-1.0%	13.3	7.5%
Business, Building and Other Support Services	92.2	76.9	73.8	-3.1	-4.0%	-18.4	-20.0%
Educational Services	154.1	163.5	162.7	-0.8	-0.5%	8.6	5.6%
Health Care and Social Assistance	285.3	302.6	301.8	-0.8	-0.3%	16.5	5.8%
Information, Culture and Recreation	77.1	77.1	77.6	0.5	0.6%	0.5	0.6%
Accommodation and Food Services	144.2	154.4	156.6	2.2	1.4%	12.4	8.6%
Other Services	118.9	105.0	105.2	0.2	0.2%	-13.7	-11.5%
Public Administration	113.1	107.3	106.0	-1.3	-1.2%	-7.1	-6.3%

CANADA

Table: 14-10-0287-01 (282-0087) Labour force survey estimates (LFS), by sex and age group, seasonally adjusted, monthly (persons unless otherwise noted)

	January 2019	December 2019	January 2020	# Change December 2019 - January 2020	% Change December 2019 - January 2020	# Change January 2019 - January 2020	% Change January 2019 - January 2020
Population (x 1,000)	30,526.6	30,964.7	30,995.4	30.7	0.1%	468.8	1.5%
Labour force (x 1,000)	20,035.9	20,267.7	20,283.5	15.8	0.08%	247.6	1.2%
Employment (x 1,000)	18,873.9	19,124.6	19,159.1	34.5	0.180%	285.2	1.5%
Employment full-time (x 1,000)	15,284.3	15,535.5	15,571.2	35.7	0.2%	286.9	1.9%
Employment part-time (x 1,000)	3,589.7	3,589.1	3,587.9	-1.2	0.0%	-1.8	-0.1%
Unemployment (x 1,000)	1,162.0	1,143.2	1,124.4	-18.8	-1.6%	-37.6	-3.2%
Unemployment rate (rate)	5.8%	5.6%	5.5%	-0.1%		-0.3%	
Participation rate (rate)	65.6%	65.5%	65.4%	-0.1%		-0.2%	
Employment rate (rate)	61.8%	61.8%	61.8%	0.0%		0.0%	

CANADA

Table: 14-10-0355-01 (282-0088) Labour force survey estimates (LFS), employment by North American Industry Classification System (NAICS), seasonally adjusted, monthly (persons x 1,000)

	January 2019	December 2019	January 2020	# Change December 2019- January 2020	% Change December 2019- January 2020	# Change January 2019 - January 2020	% Change January 2019 - January 2020
Total Employed - All Industries	18,873.9	19,124.6	2,318.5	-16,806.1	-87.9%	-16,555.4	-87.7%
Goods-Producing Sector	3,937.2	3,925.1	3,974.2	49.1	1.3%	37.0	0.9%
Agriculture	274.9	291.5	303.0	11.5	3.9%	28.1	10.2%
Forestry, Fishing, Mining, Quarrying, Oil and Gas	339.5	315.3	314.0	-1.3	-0.4%	-25.5	-7.5%
Utilities	143.9	133.8	136.4	2.6	1.9%	-7.5	-5.2%
Construction	1,444.9	1,481.8	1,497.6	15.8	1.1%	52.7	3.6%
Manufacturing	1,734.0	1,702.7	1,723.2	20.5	1.2%	-10.8	-0.6%
Services-Producing Sector	14,936.8	15,199.5	15,185.0	-14.5	-0.1%	248.2	1.7%
Trade	2,808.4	2,850.8	2,858.7	7.9	0.3%	50.3	1.8%
Transportation and Warehousing	1,041.4	1,026.1	1,032.2	6.1	0.6%	-9.2	-0.9%
Finance, Insurance, Real Estate and Leasing	1,167.6	1,240.5	1,238.9	-1.6	-0.1%	71.3	6.1%
Professional, Scientific and Technical Services	1,517.7	1,574.3	1,577.6	3.3	0.2%	59.9	3.9%
Business, Building and Other Support Services	809.1	758.7	755.2	-3.5	-0.5%	-53.9	-6.7%
Educational Services	1,347.8	1,389.4	1,390.3	0.9	0.1%	42.5	3.2%
Health Care and Social Assistance	2,462.3	2,530.7	2,514.7	-16.0	-0.6%	52.4	2.1%
Information, Culture and Recreation	760.6	764.8	764.3	-0.5	-0.1%	3.7	0.5%
Accommodation and Food Services	1,232.1	1,244.9	1,242.7	-2.2	-0.2%	10.6	0.9%
Other Services	810.3	805.1	797.5	-7.6	-0.9%	-12.8	-1.6%
Public Administration	979.4	1,014.4	1,012.7	-1.7	-0.2%	33.3	3.4%

Unemployment Rates for Key Markets

	January 2019	December 2019	January 2020
Calgary	7.3%	7.1%	7.2%
Alberta	6.8%	7.0%	7.3%
Canada	5.8%	5.6%	5.5%
Montreal	6.1%	6.0%	6.0%
Ottawa	5.2%	4.4%	4.3%
Toronto	6.1%	4.4%	4.3%
Edmonton	6.4%	8.1%	8.2%
Vancouver	4.8%	4.8%	4.5%
Winnipeg	5.7%	5.3%	5.2%
Regina	4.8%	6.0%	6.7%
Saskatoon	5.8%	5.7%	5.8%
Wood Buffalo			

Facts & Figures

Highest Unemployment Rate during 2008-2010 downturn: 7.5% in January 2010

Highest Unemployment Rate during 1992-1996 downturn: 10.8% in July 1993
Number of additional jobs we would need to lose to reach this level: 33,316
(or amount labour force would need to grow by with no additional new jobs)

Highest Unemployment Rate during 1982-1985 downturn: 13.2% in March 1983
Number of additional jobs we would need to lose to reach this level: 55,564
(or amount labour force would need to grow by with no additional new jobs)

The last time Calgary had negative employment growth:

Between November 2009 and May 2010 Calgary lost 12,900 jobs.
Between November 2008 and July 2009 Calgary lost 27,000 jobs.
From peak employment in November 2008 to the lowest level reached in May 2010 - 33,400 jobs were lost in Calgary.

Calgary lost a small number of jobs July-August 2012 (2,400), again in March 2013 (3,200), and again (3,300) in February to April 2014.

Calgary

Number of jobs gained/lost in 2014:	17,600
Number of jobs gained/lost in 2015:	(8,100)
Number of jobs gained/lost December 2014 to June 2016:	(13,300)
Number of jobs gained/lost in 2016:	14,400
Number of jobs gained/lost in 2017:	15,500
Number of jobs gained/lost in 2018:	10,100
Number of jobs gained/lost in 2019:	22,800
Number of jobs gained/lost in 2020 (to-date):	(8,100)

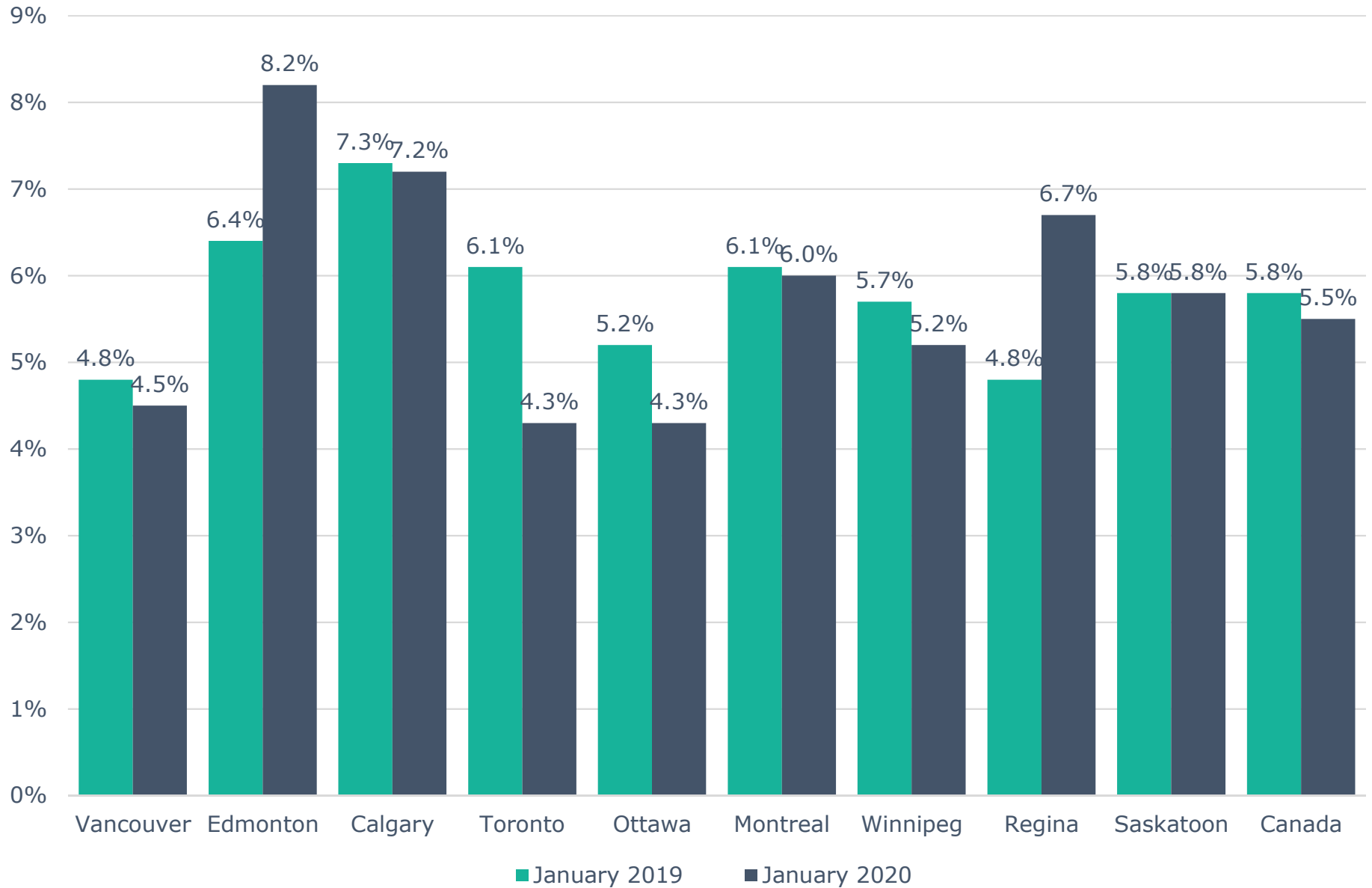
Alberta

Number of jobs gained/lost in 2014:	59,900
Number of jobs gained/lost in 2015:	(20,500)
Number of jobs gained/lost December 2014 to June 2016:	(46,100)
Number of jobs gained/lost in 2016:	(15,700)
Number of jobs gained/lost in 2017:	54,900
Number of jobs gained/lost in 2018:	21,300
Number of jobs gained/lost in 2019:	11,000
Number of jobs gained/lost in 2020 (to-date):	(18,900)

Source: Calgary - Table 14-10-0294-02 (282-0135); Alberta - 14-10-0287-01 (282-0087); Statistics Canada

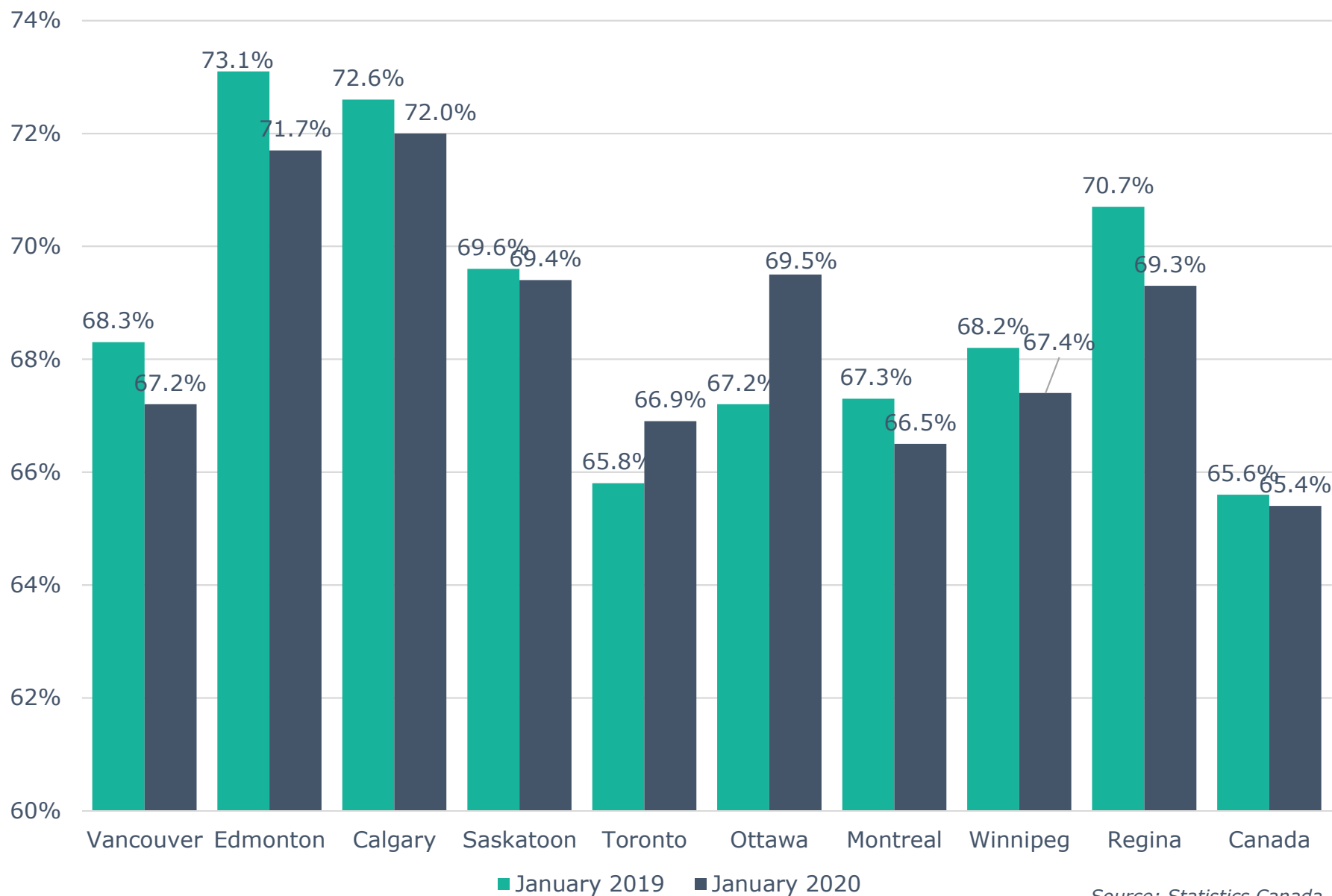
Note: Labour Force Survey, Employment, Seasonally Adjusted

Unemployment Rate Across Canada



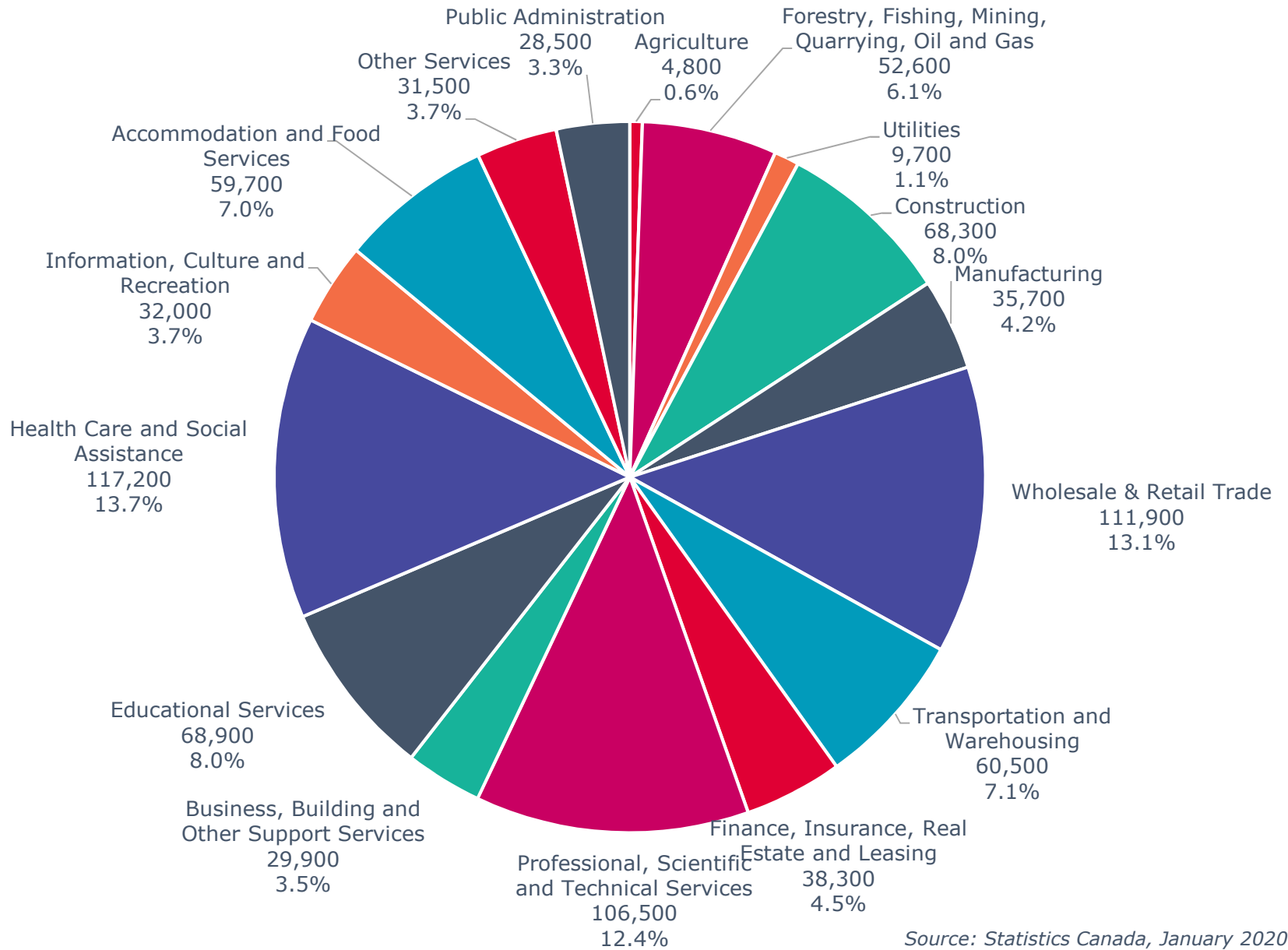
Source: Statistics Canada

Labour Force Participation Rate Across Canada



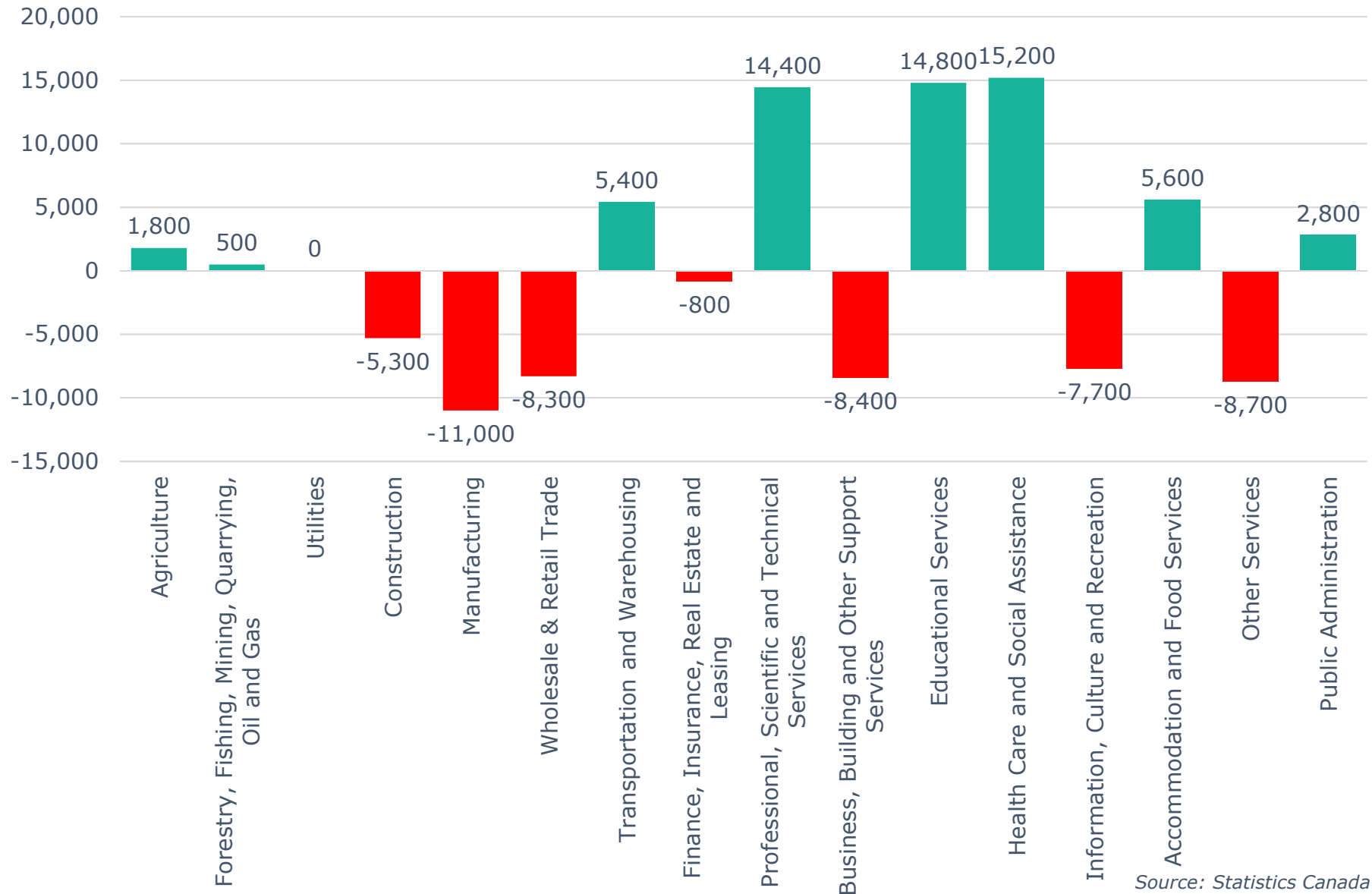
Source: Statistics Canada

Calgary CMA Employment by Industry (855,900)



Source: Statistics Canada, January 2020

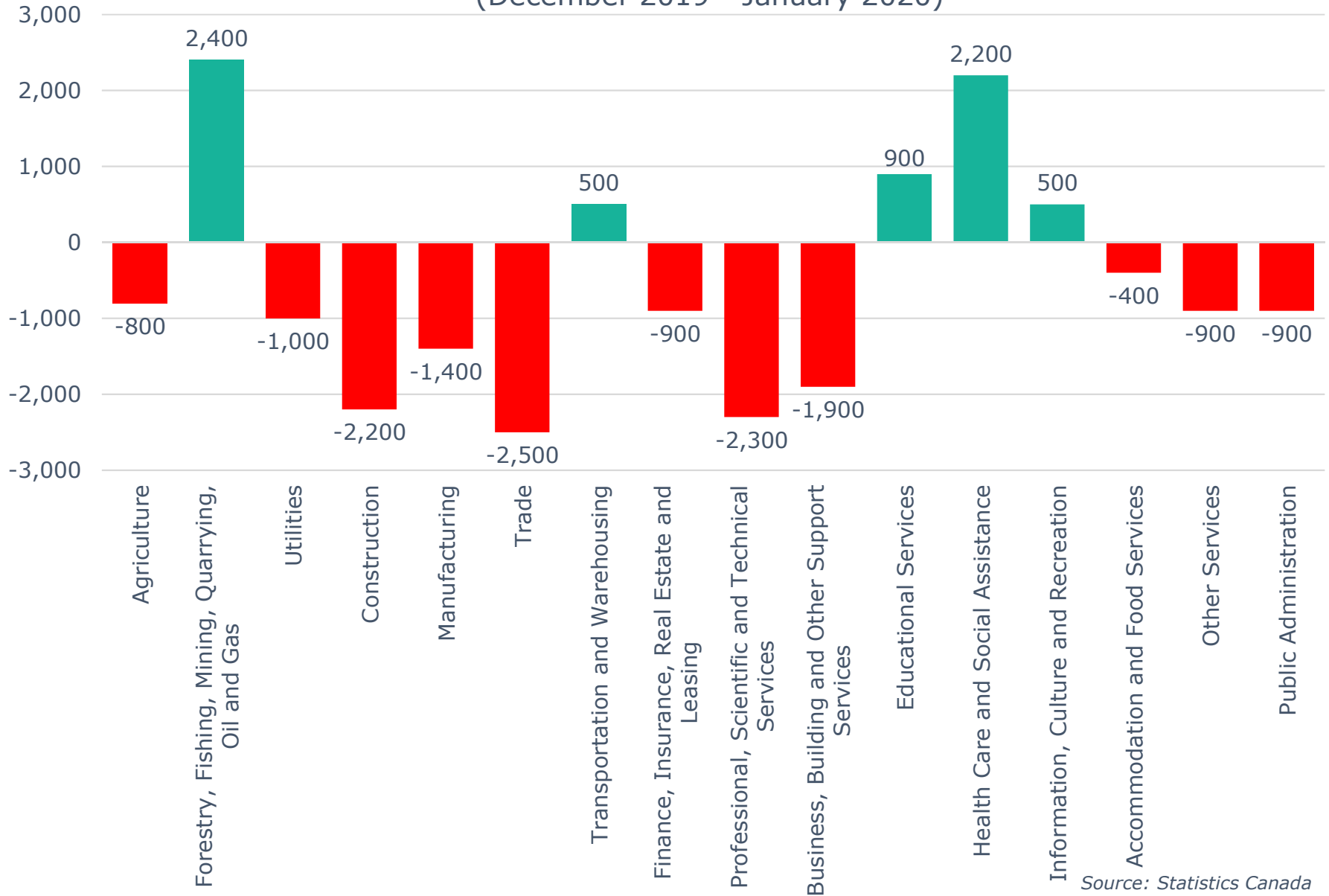
Calgary CMA 12-Month Net Jobs Gained or Lost by Industry (January 2020)



Source: Statistics Canada

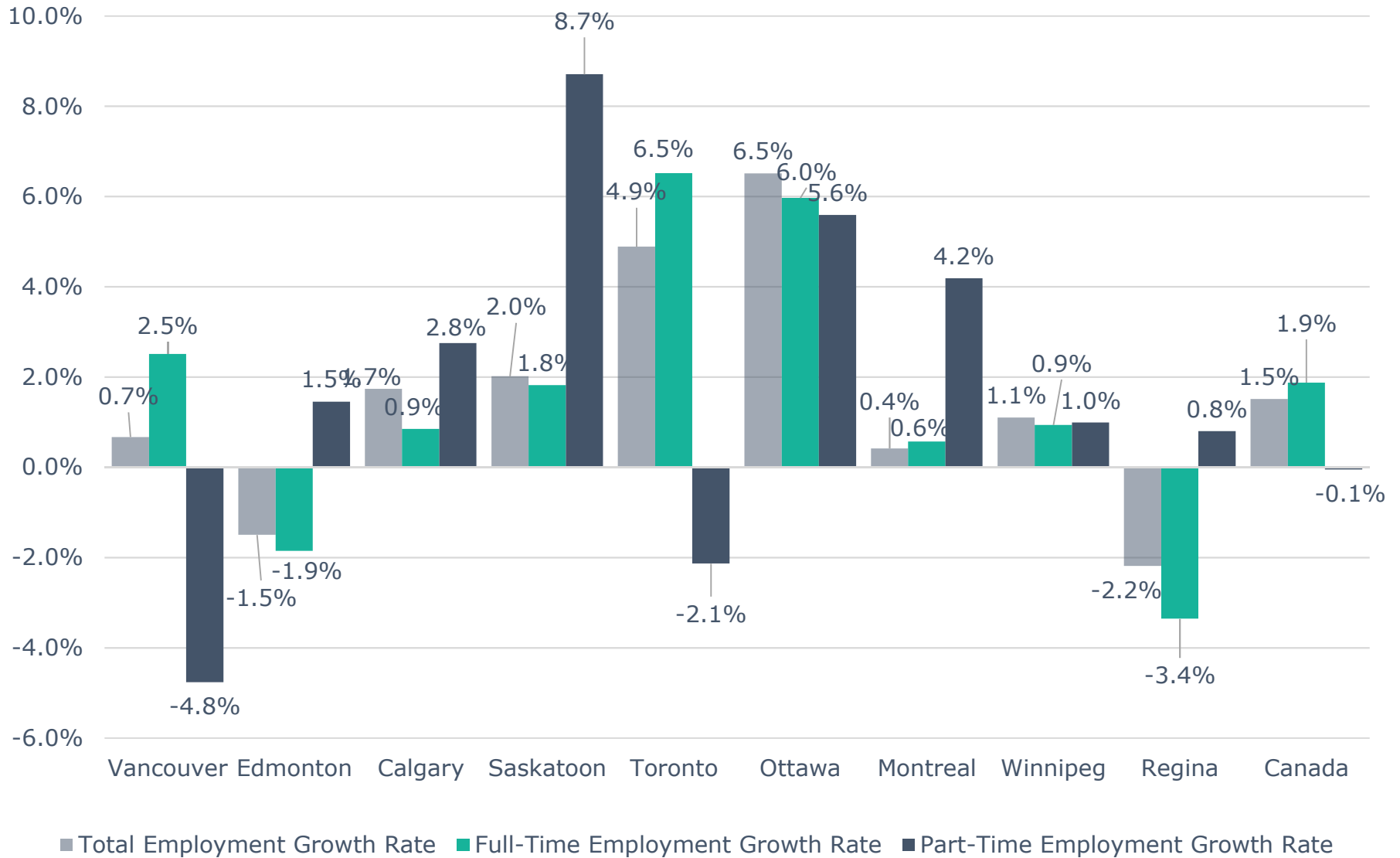
Calgary CMA Monthly Net Jobs Gained or Lost by Industry

(December 2019 - January 2020)



Source: Statistics Canada

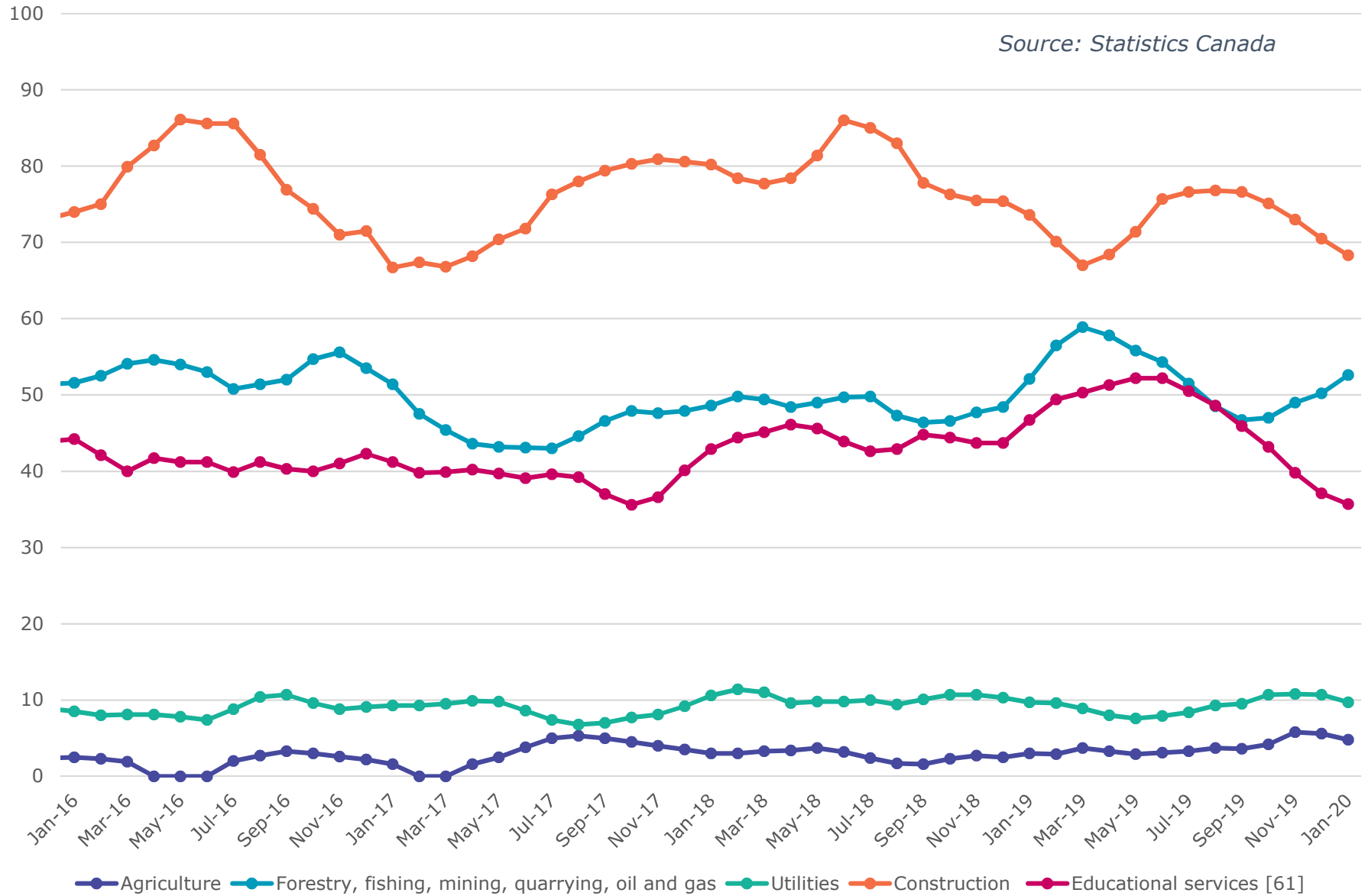
Annual Employment Growth



Source: Statistics Canada, January 2019 - January 2020

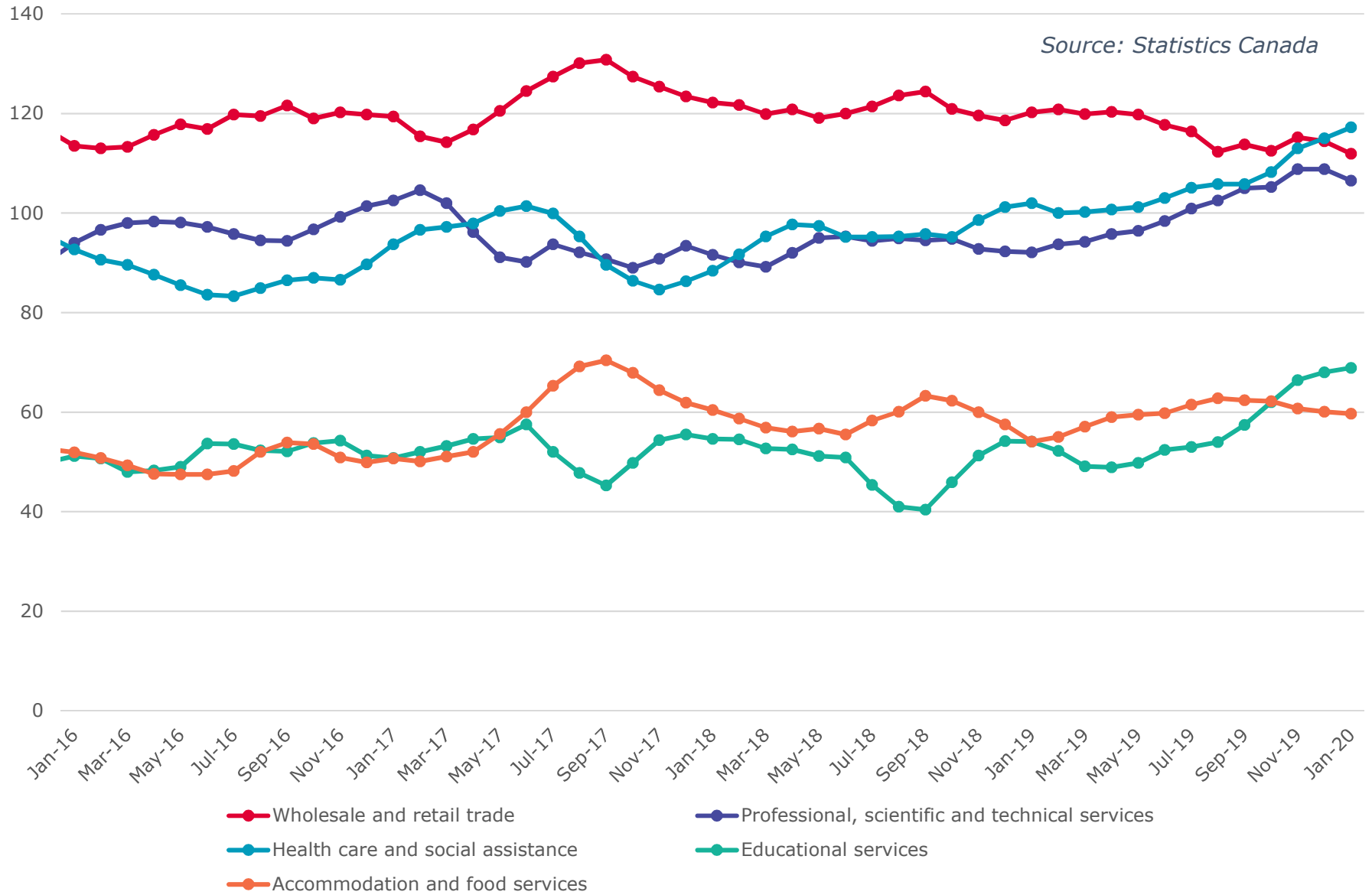
Calgary CMA Goods Producing Sectors - Number of Employees (In thousands)

Source: Statistics Canada



Calgary CMA Largest 5 Services Sector by Number of Employees (In thousands)

Source: Statistics Canada



Calgary CMA Smallest 6 Service Sectors by Number of Employees (In thousands)

