



Monthly Labour Force Survey Statistics
December 2018

CALGARY CMA

Table 282-0135 Labour force survey estimates (LFS), by census metropolitan area based on 2011 census boundaries, 3-month moving average, seasonally adjusted, monthly (persons unless otherwise noted)

	December 2017	November 2018	December 2018	# Change November 2018 -	% Change November 2018 - December 2018	# Change December 2017 - December 2018	% Change December 2017 - December 2018
Population (x 1,000)	1,229.1	1,253.0	1,255.2	2.2	0.2%	26.1	2.1%
Labour force (x 1,000)	901.4	914.6	911.0	-3.6	-0.4%	9.6	1.1%
Employment (x 1,000)	834.1	842.3	842.0	-0.3	0.0%	7.9	0.9%
Unemployment (x 1,000)	67.3	72.3	69.0	-3.3	-4.6%	1.7	2.5%
Unemployment rate (rate)	7.5%	7.9%	7.6%	-0.3%		0.1%	
Participation rate (rate)	73.3%	73.0%	72.6%	-0.4%		-0.7%	
Employment rate (rate)	67.9%	67.2%	67.1%	-0.1%		-0.8%	

CALGARY CMA

Table 282-0128 Labour force survey estimates (LFS), by census metropolitan area based on 2011 census boundaries, 3-month moving average, unadjusted for seasonality, monthly (persons unless otherwise noted)

	December 2017	November 2018	December 2018	# Change November 2018 - December	% Change November 2018 - December 2018	# Change December 2017 - December 2018	% Change December 2017 - December 2018
Population (x 1,000)	1,229.1	1,253.0	1,255.2	2.2	0.2%	26.1	2.1%
Labour force (x 1,000)	896.1	909.1	905.7	-3.4	-0.4%	9.6	1.1%
Employment (x 1,000)	831.6	840.4	841.9	1.5	0.2%	10.3	1.2%
Full-time employment (x 1,000)	674.3	680.8	680.4	-0.4	-0.1%	6.1	0.9%
Part-time employment (x 1,000)	157.3	159.6	161.5	1.9	1.2%	4.2	2.7%
Unemployment (x 1,000)	64.5	68.7	63.8	-4.9	-7.1%	-0.7	-1.1%
Not in labour force (x 1,000)	333.1	344.0	349.5	5.5	1.6%	16.4	4.9%
Unemployment rate (rate)	7.2%	7.6%	7.0%	-0.6%		-0.2%	
Participation rate (rate)	72.9%	72.6%	72.2%	-0.4%		-0.7%	
Employment rate (rate)	67.7%	67.1%	67.1%	0.0%		-0.6%	

CALGARY CMA

Table 282-0130 Labour force survey estimates (LFS), employment by census metropolitan area based on 2011 census boundaries and North American Industry Classification System (NAICS), 3-month moving average, unadjusted for seasonality, monthly (persons x 1,000)

	December2017	November 2018	December2018	# Change November 2018 - December 2018	% Change November 2018 - December 2018	# Change December2017 - December 2018	% Change December2017 - December 2018
Total Employed - All Industries	831.6	840.4	841.9	1.5	0.2%	10.3	1.2%
Goods-Producing Sector	181.4	180.3	180.2	-0.1	-0.1%	-1.2	-0.7%
Agriculture	3.5	2.7	2.5	-0.2	-7.4%	-1.0	-28.6%
Forestry, Fishing, Mining, Quarrying, Oil and Gas	47.9	47.7	48.4	0.7	1.5%	0.5	1.0%
Utilities	9.2	10.7	10.3	-0.4	-3.7%	1.1	12.0%
Construction	80.6	75.5	75.4	-0.1	-0.1%	-5.2	-6.5%
Manufacturing	40.1	43.7	43.7	0.0	0.0%	3.6	9.0%
Services-Producing Sector	650.2	660.1	661.6	1.5	0.2%	11.4	1.8%
Wholesale & Retail Trade	123.4	119.6	118.6	-1.0	-0.8%	-4.8	-3.9%
Transportation and Warehousing	55.0	58.3	57.0	-1.3	-2.2%	2.0	3.6%
Finance, Insurance, Real Estate and Leasing	40.5	37.5	37.2	-0.3	-0.8%	-3.3	-8.1%
Professional, Scientific and Technical Services	93.4	92.8	92.3	-0.5	-0.5%	-1.1	-1.2%
Business, Building and Other Support Services	35.2	34.4	36.4	2.0	5.8%	1.2	3.4%
Educational Services	55.5	51.3	54.2	2.9	5.7%	-1.3	-2.3%
Health Care and Social Assistance	86.3	98.6	101.2	2.6	2.6%	14.9	17.3%
Information, Culture and Recreation	34.3	40.0	40.6	0.6	1.5%	6.3	18.4%
Accommodation and Food Services	61.9	60.0	57.5	-2.5	-4.2%	-4.4	-7.1%
Other Services	33.6	42.4	40.9	-1.5	-3.5%	7.3	21.7%
Public Administration	31.2	25.1	25.7	0.6	2.4%	-5.5	-17.6%

Province of Alberta

Table 282-0087 Labour force survey estimates (LFS), by sex and age group, seasonally adjusted, monthly (persons unless otherwise noted)

	November 2017	November 2018	December 2018	# Change November 2018 - December 2018	% Change November 2018 - December 2018	# Change December 2017 - December 2018	% Change December 2017 - December 2018
Population (x 1,000)	3,443.7	3,490.2	3,493.9	3.7	0.1%	50.2	1.5%
Labour force (x 1,000)	2,494.2	2,516.9	2,501.8	-15.1	-0.60%	7.6	0.3%
Employment (x 1,000)	2,320.4	2,358.9	2,342.0	-16.9	-0.7%	21.6	0.9%
Employment full-time (x 1,000)	1,889.8	1,956.2	1,920.0	-36.2	-1.9%	30.2	1.6%
Employment part-time (x 1,000)	430.6	402.7	422.0	19.3	4.8%	-8.6	-2.0%
Unemployment (x 1,000)	173.8	158.0	159.8	1.8	1.1%	-14.0	-8.1%
Unemployment rate (rate)	7.0%	6.3%	6.4%	0.1%		-0.6%	
Participation rate (rate)	72.4%	72.1%	71.6%	-0.5%		-0.8%	
Employment rate (rate)	67.4%	67.6%	67.0%	-0.6%		-0.4%	

Province of Alberta

Table 282-0088 Labour force survey estimates (LFS), employment by North American Industry Classification System (NAICS), seasonally adjusted, monthly (persons x 1,000)

	December 2017	November 2018	December 2018	# Change November 2018 - December 2018	% Change November 2018 - December 2018	# Change December 2017 - December 2018	% Change December 2017 - December 2018
Total Employed - All Industries	2,320.4	2,358.9	2,342.0	-16.9	-0.7%	21.6	0.9%
Goods-Producing Sector	595.7	606.8	601.3	-5.5	-0.9%	5.6	0.9%
Agriculture	51.4	48.1	48.4	0.3	0.6%	-3.0	-5.8%
Forestry, Fishing, Mining, Quarrying, Oil and Gas	152.2	153.2	151.6	-1.6	-1.0%	-0.6	-0.4%
Utilities	19.9	25.5	23.8	-1.7	-6.7%	3.9	19.6%
Construction	245.9	249.8	241.2	-8.6	-3.4%	-4.7	-1.9%
Manufacturing	126.3	130.2	136.3	6.1	4.7%	10.0	7.9%
Services-Producing Sector	1,724.7	1,752.1	1,740.7	-11.4	-0.7%	16.0	0.9%
Wholesale & Retail Trade	343.0	328.9	325.0	-3.9	-1.2%	-18.0	-5.2%
Transportation and Warehousing	143.6	139.6	139.8	0.2	0.1%	-3.8	-2.6%
Finance, Insurance, Real Estate and Leasing	113.2	108.0	102.9	-5.1	-4.7%	-10.3	-9.1%
Professional, Scientific and Technical Services	176.8	182.1	181.3	-0.8	-0.4%	4.5	2.5%
Business, Building and Other Support Services	80.6	91.0	92.4	1.4	1.5%	11.8	14.6%
Educational Services	156.7	152.9	154.3	1.4	0.9%	-2.4	-1.5%
Health Care and Social Assistance	266.2	287.8	289.6	1.8	0.6%	23.4	8.8%
Information, Culture and Recreation	74.4	78.4	77.3	-1.1	-1.4%	2.9	3.9%
Accommodation and Food Services	148.3	150.8	149.4	-1.4	-0.9%	1.1	0.7%
Other Services	114.8	116.4	118.0	1.6	1.4%	3.2	2.8%
Public Administration	107.1	116.3	110.6	-5.7	-4.9%	3.5	3.3%

CANADA

Table 282-0087 Labour force survey estimates (LFS), by sex and age group, seasonally adjusted, monthly (persons unless otherwise noted)

	December 2017	November 2018	December 2018	# Change November 2018 - December	% Change November 2018 - December 2018	# Change December 2017 - December 2018	% Change December 2017 - December 2018
Population (x 1,000)	30,058.9	30,452.3	30,485.2	32.9	0.1%	426.3	1.4%
Labour force (x 1,000)	19,784.2	19,923.9	19,933.5	9.6	0.05%	149.3	0.8%
Employment (x 1,000)	18,645.1	18,799.1	18,808.4	9.3	0.049%	163.3	0.9%
Employment full-time (x 1,000)	15,074.7	15,278.9	15,260.0	-18.9	-0.1%	185.3	1.2%
Employment part-time (x 1,000)	3,570.4	3,520.2	3,548.5	28.3	0.8%	-21.9	-0.6%
Unemployment (x 1,000)	1,139.1	1,124.8	1,125.1	0.3	0.0%	-14.0	-1.2%
Unemployment rate (rate)	5.8%	5.6%	5.6%	0.0%		-0.2%	
Participation rate (rate)	65.8%	65.4%	65.4%	0.0%		-0.4%	
Employment rate (rate)	62.0%	61.7%	61.7%	0.0%		-0.3%	

CANADA

Table 282-0088 Labour force survey estimates (LFS), employment by North American Industry Classification System (NAICS), seasonally adjusted, monthly (persons x 1,000)

	December2017	November 2018	December2018	# Change November 2018 - December2018	% Change November 2018 - December2018	# Change December2017 - December2018	% Change December2017 - December2018
Total Employed - All Industries	18,645.1	18,799.1	18,808.4	9.3	0.0%	163.3	0.9%
Goods-Producing Sector	3,959.3	3,949.0	3,971.6	22.6	0.6%	12.3	0.3%
Agriculture	275.9	282.3	283.7	1.4	0.5%	7.8	2.8%
Forestry, Fishing, Mining, Quarrying, Oil and Gas	336.9	340.2	344.0	3.8	1.1%	7.1	2.1%
Utilities	128.3	153.0	148.7	-4.3	-2.8%	20.4	15.9%
Construction	1,448.8	1,458.2	1,455.8	-2.4	-0.2%	7.0	0.5%
Manufacturing	1,769.4	1,715.4	1,739.3	23.9	1.4%	-30.1	-1.7%
Services-Producing Sector	14,685.8	14,850.1	14,836.8	-13.3	-0.1%	151.0	1.0%
Trade	2,840.7	2,800.2	2,774.1	-26.1	-0.9%	-66.6	-2.3%
Transportation and Warehousing	970.8	1,011.8	1,026.5	14.7	1.5%	55.7	5.7%
Finance, Insurance, Real Estate and Leasing	1,195.6	1,170.3	1,165.9	-4.4	-0.4%	-29.7	-2.5%
Professional, Scientific and Technical Services	1,463.5	1,491.7	1,489.0	-2.7	-0.2%	25.5	1.7%
Business, Building and Other Support Services	756.1	806.4	814.8	8.4	1.0%	58.7	7.8%
Educational Services	1,307.2	1,339.4	1,340.6	1.2	0.1%	33.4	2.6%
Health Care and Social Assistance	2,381.5	2,444.9	2,455.8	10.9	0.4%	74.3	3.1%
Information, Culture and Recreation	796.4	766.7	759.7	-7.0	-0.9%	-36.7	-4.6%
Accommodation and Food Services	1,226.7	1,243.3	1,246.6	3.3	0.3%	19.9	1.6%
Other Services	793.8	800.6	805.7	5.1	0.6%	11.9	1.5%
Public Administration	953.4	974.7	958.2	-16.5	-1.7%	4.8	0.5%

Unemployment Rates for Key Markets

	December 2017	November 2018	December 2018
Calgary	7.5%	7.9%	7.6%
Alberta	7.0%	6.3%	6.4%
Canada	5.8%	5.6%	5.6%
Montreal	6.4%	5.9%	5.9%
Ottawa	5.7%	4.6%	4.6%
Toronto	6.0%	4.6%	4.6%
Edmonton	7.4%	6.3%	6.2%
Vancouver	4.2%	4.3%	4.1%
Winnipeg	5.7%	6.1%	5.9%
Regina	4.8%	6.8%	6.4%
Saskatoon	7.7%	6.9%	6.1%
Wood Buffalo	6.2%	5.3%	5.1%

Facts & Figures

Highest Unemployment Rate during 2008-2010 downturn: 7.5% in January 2010

Highest Unemployment Rate during 1992-1996 downturn: 10.8% in July 1993
Number of additional jobs we would need to lose to reach this level: 29,388
(or amount labour force would need to grow by with no additional new jobs)

Highest Unemployment Rate during 1982-1985 downturn: 13.2% in March 1983
Number of additional jobs we would need to lose to reach this level: 51,252
(or amount labour force would need to grow by with no additional new jobs)

The last time Calgary had negative employment growth:

Between November 2009 and May 2010 Calgary lost 12,900 jobs.

Between November 2008 and July 2009 Calgary lost 27,000 jobs.

From peak employment in November 2008 to the lowest level reached in May 2010 - 33,400 jobs were lost in Calgary.

Calgary lost a small number of jobs July-August 2012 (2,400), again in March 2013 (3,200), and again (3,300) in February to April 2014.

Calgary

Number of jobs gained/lost in 2014:	17,600
Number of jobs gained/lost in 2015:	(8,100)
Number of jobs gained/lost December 2014 to June 2016:	(13,500)
Number of jobs gained/lost in 2016:	15,500
Number of jobs gained/lost in 2017:	16,000
Number of jobs gained/lost in 2018:	7,900

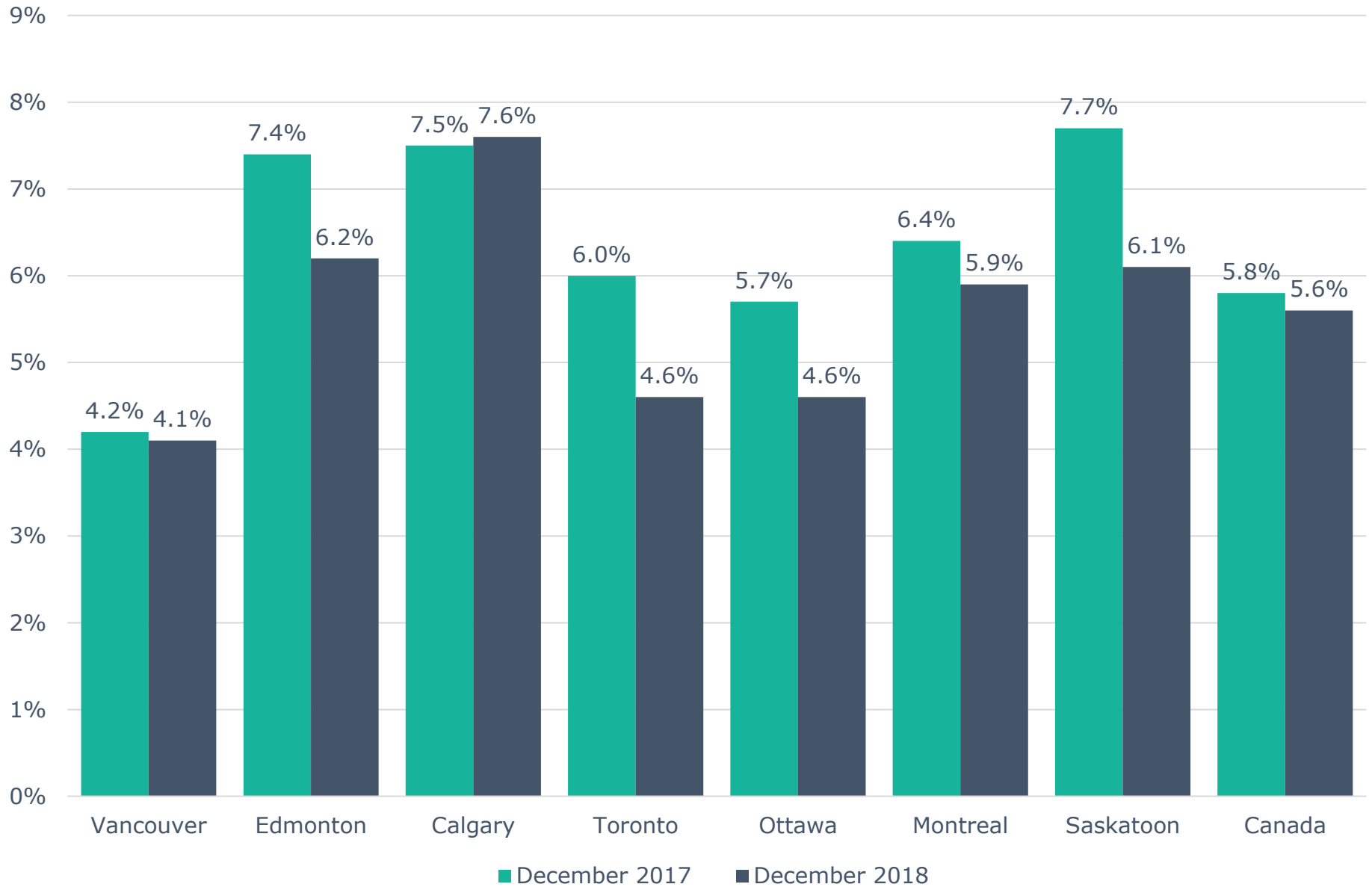
Alberta

Number of jobs gained/lost in 2014:	59,900
Number of jobs gained/lost in 2015:	(20,500)
Number of jobs gained/lost December 2014 to June 2016:	(46,300)
Number of jobs gained/lost in 2016:	(15,900)
Number of jobs gained/lost in 2017:	54,900
Number of jobs gained/lost in 2018:	21,600

Source: Table 282-0135 (Calgary, Table 282-0087 (Alberta), Statistics Canada

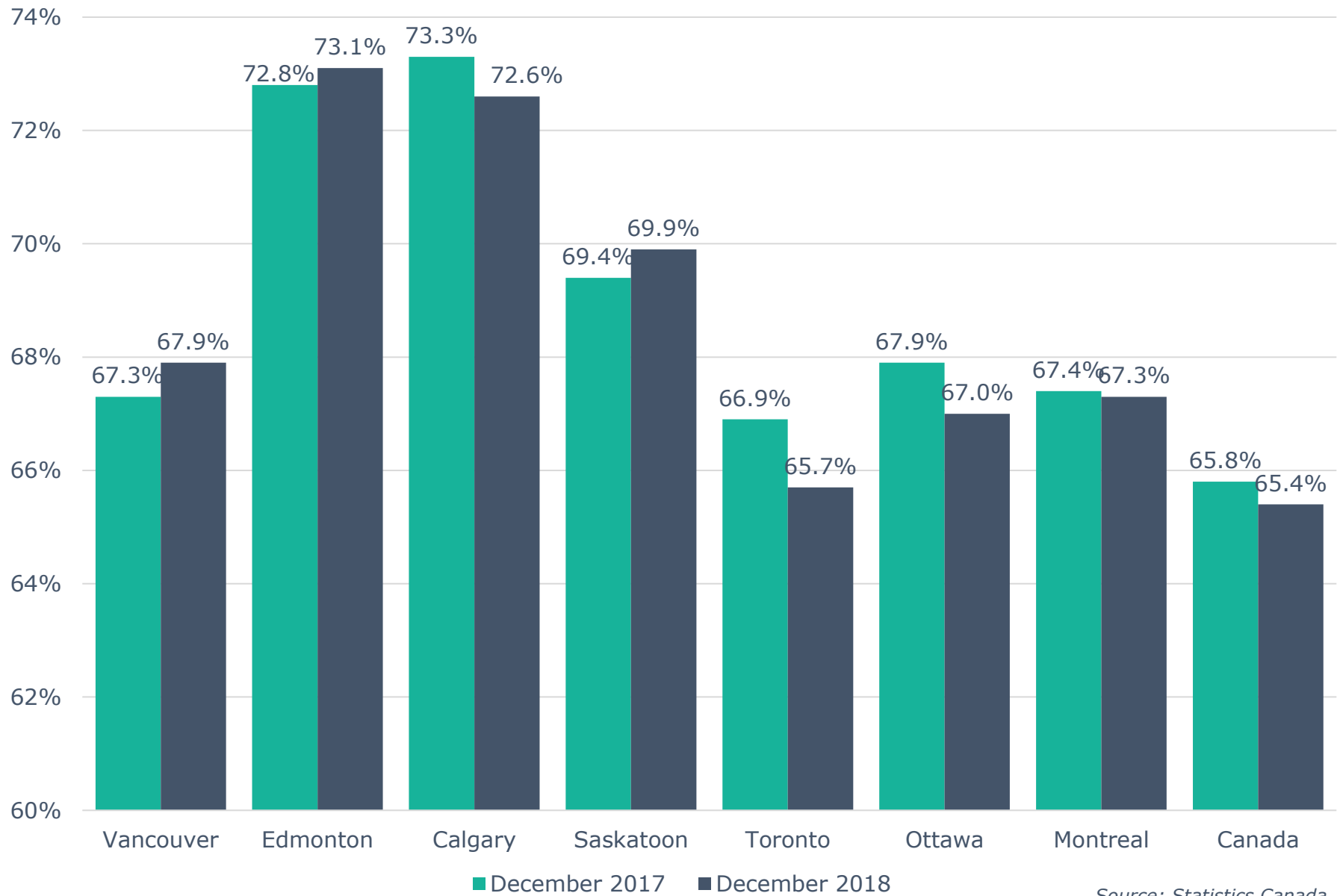
Note: Labour Force Survey, Employment, Seasonally Adjusted

Unemployment Rate Across Canada



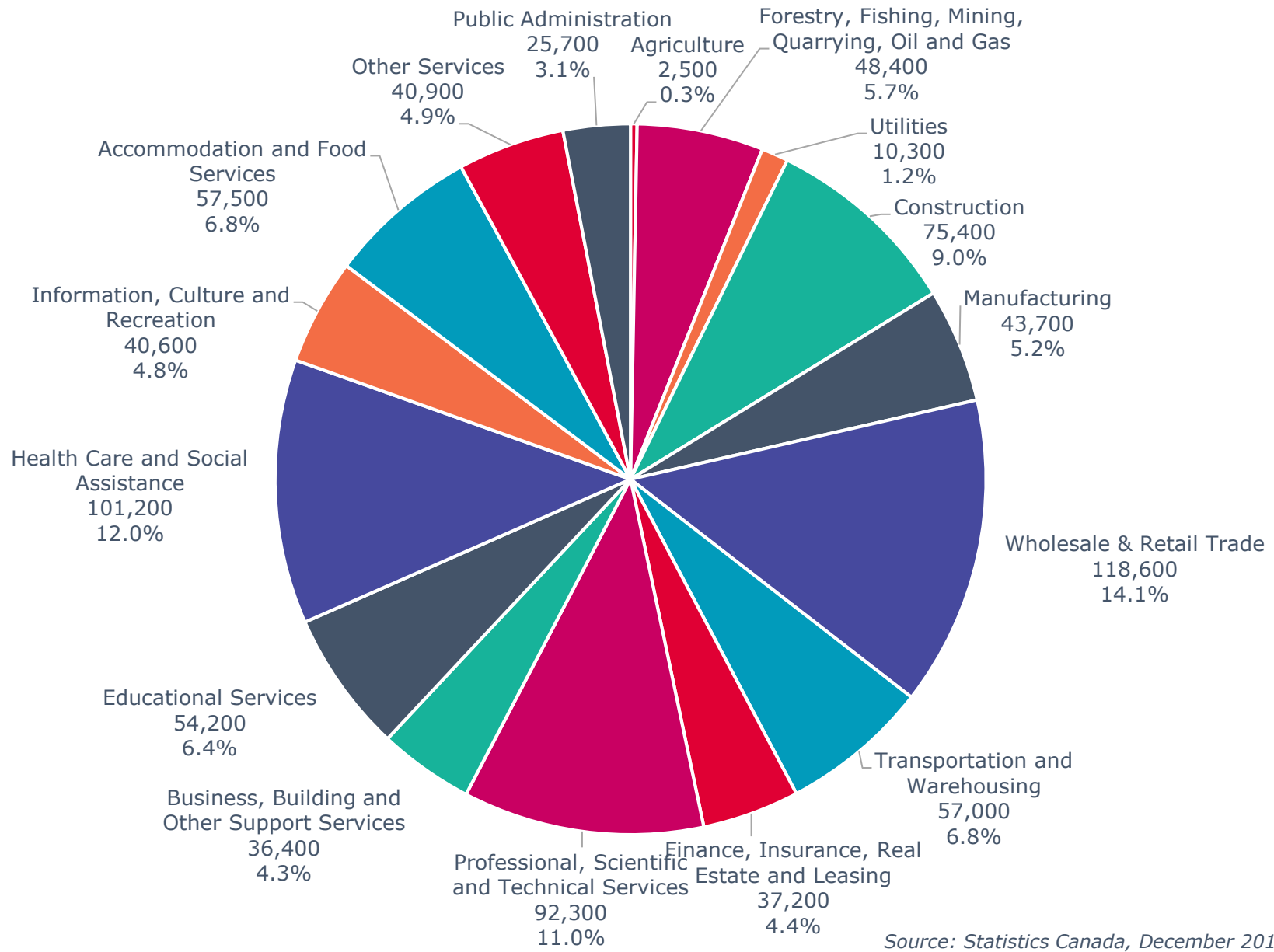
Source: Statistics Canada

Labour Force Participation Rate Across Canada



Source: Statistics Canada

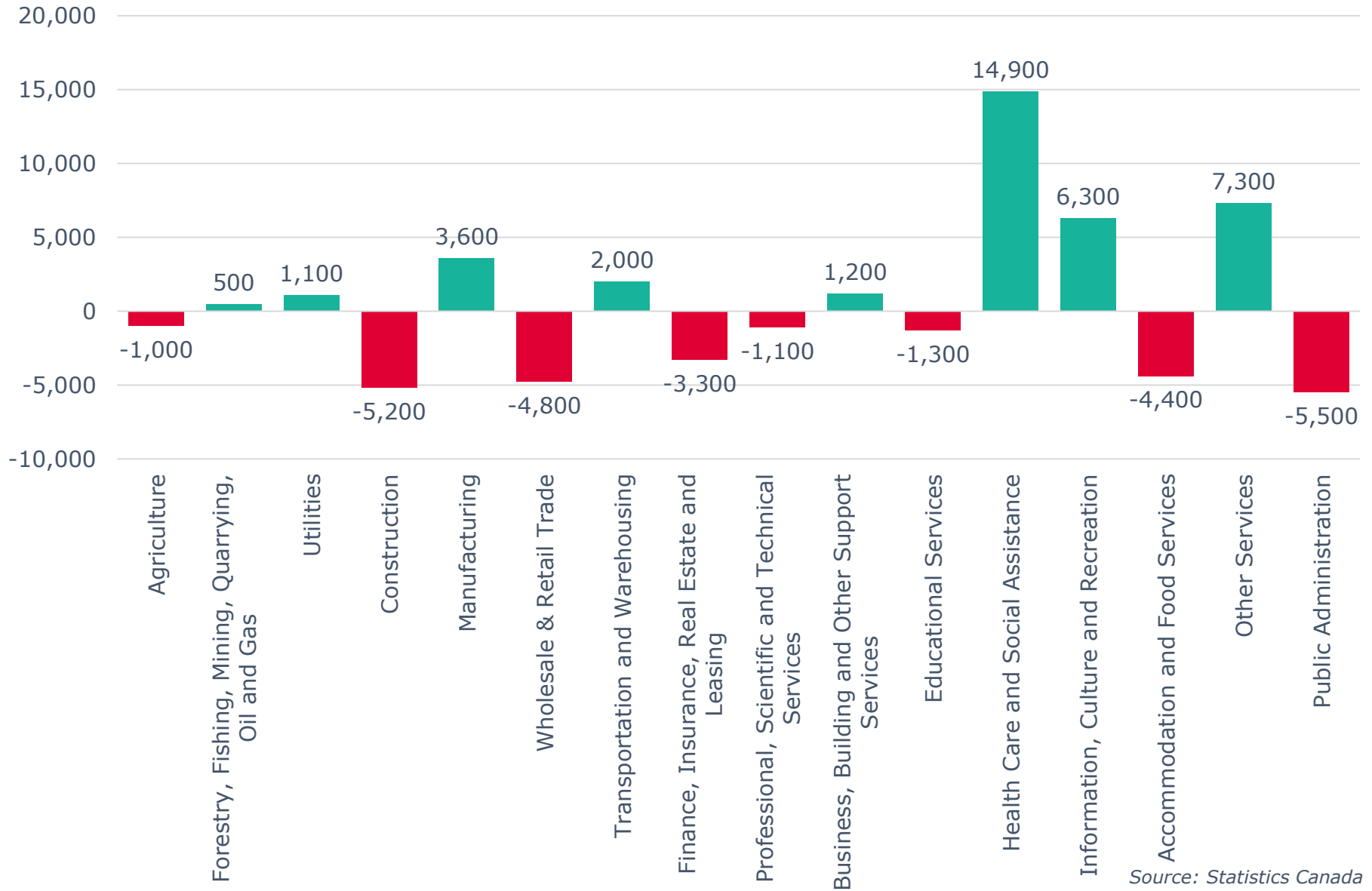
Calgary CMA Employment by Industry (842,000)



Source: Statistics Canada, December 2018

Calgary CMA 12-Month Net Jobs Gained or Lost by Industry

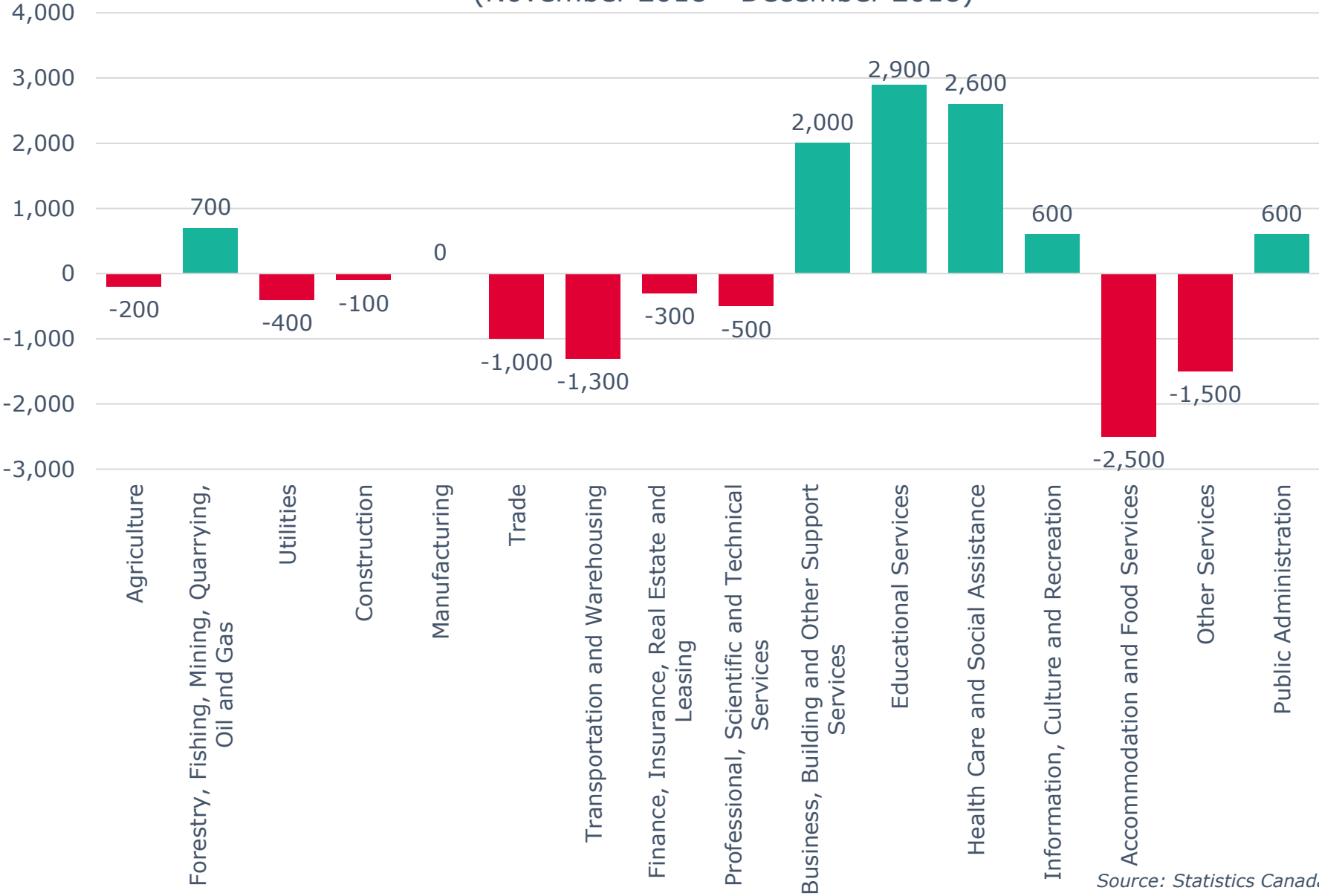
(December 2018)



Source: Statistics Canada

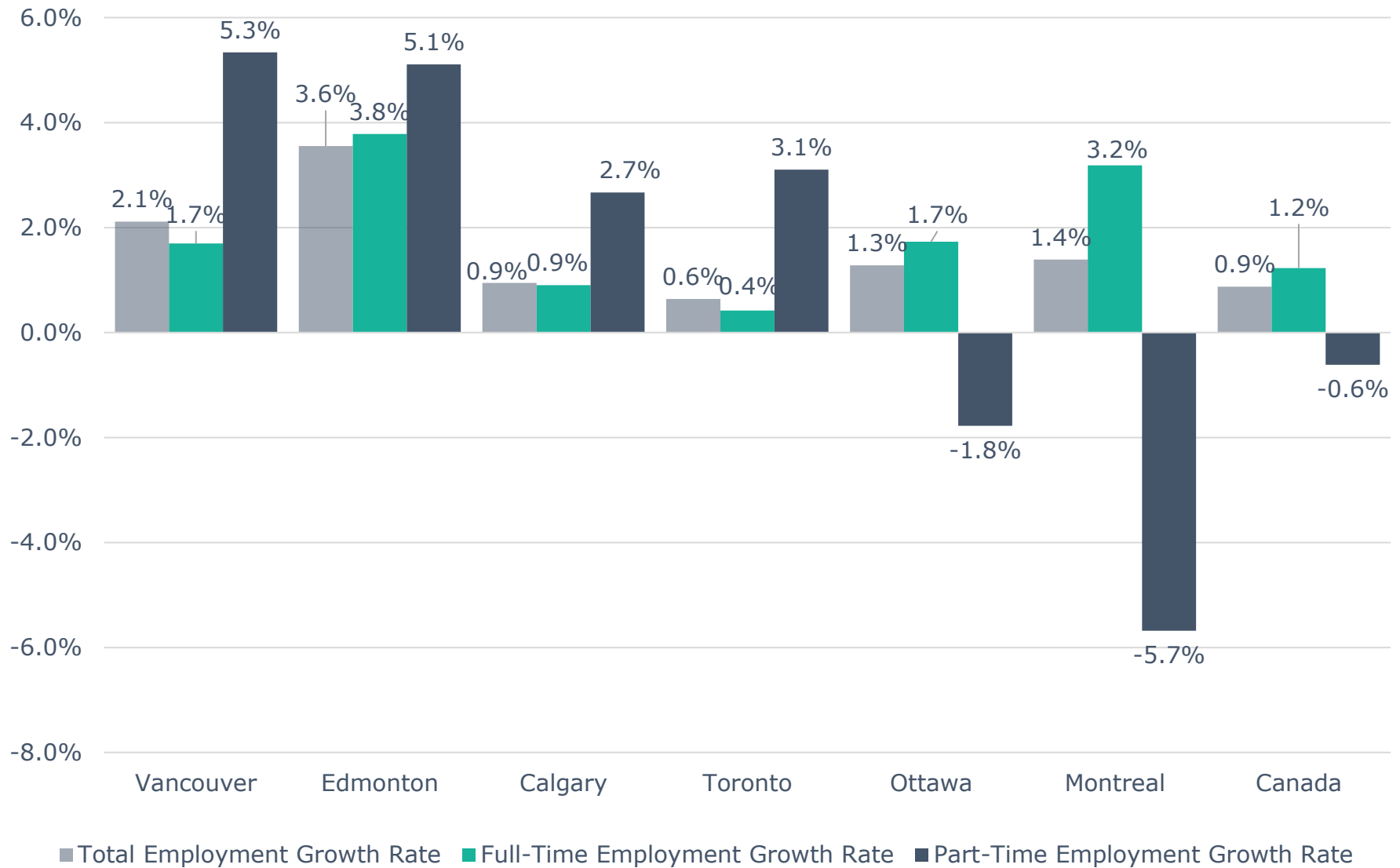
Calgary CMA Monthly Net Jobs Gained or Lost by Industry

(November 2018 - December 2018)



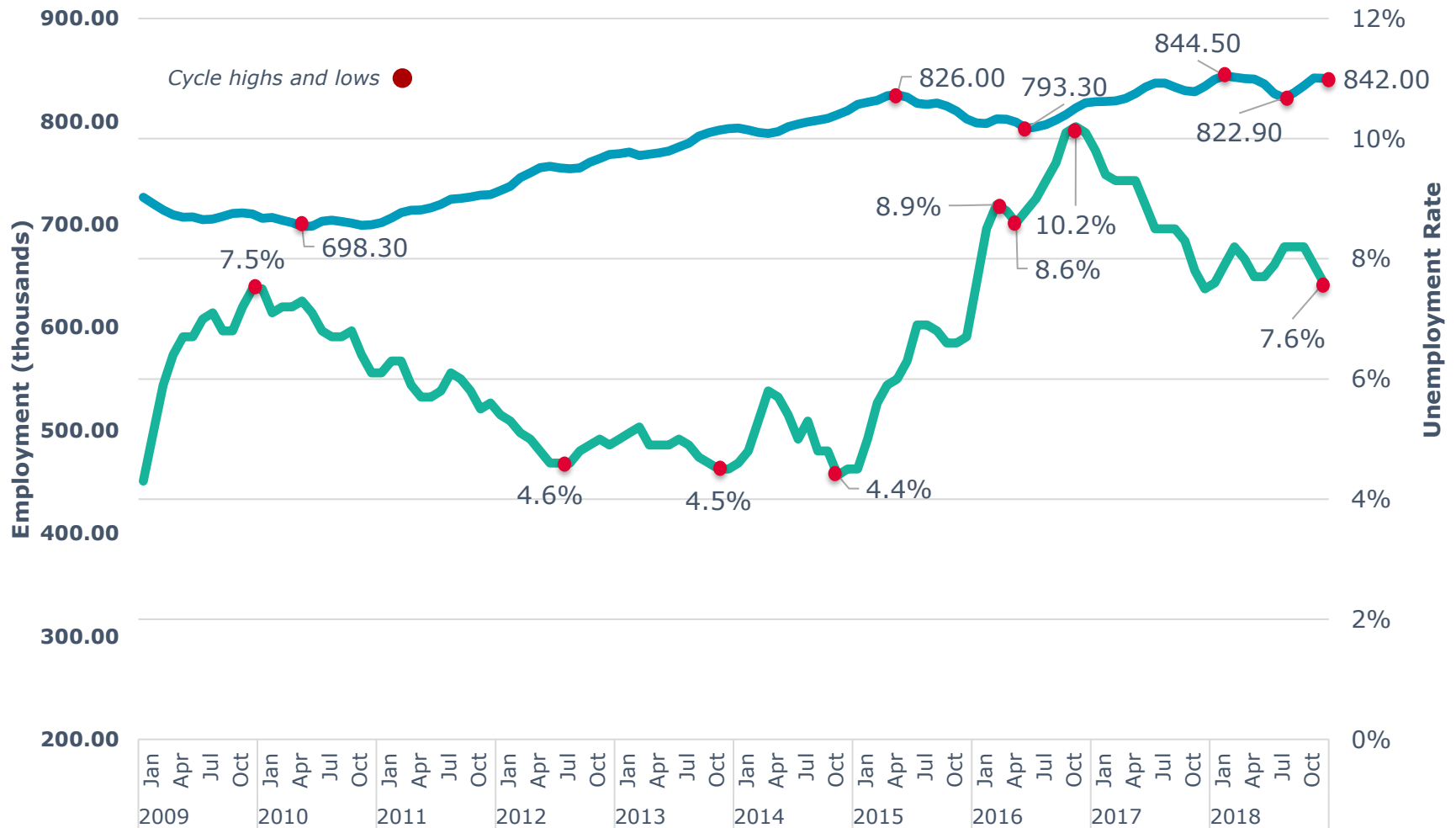
Source: Statistics Canada

Annual Employment Growth



Source: Statistics Canada, December 2017 - December 2018

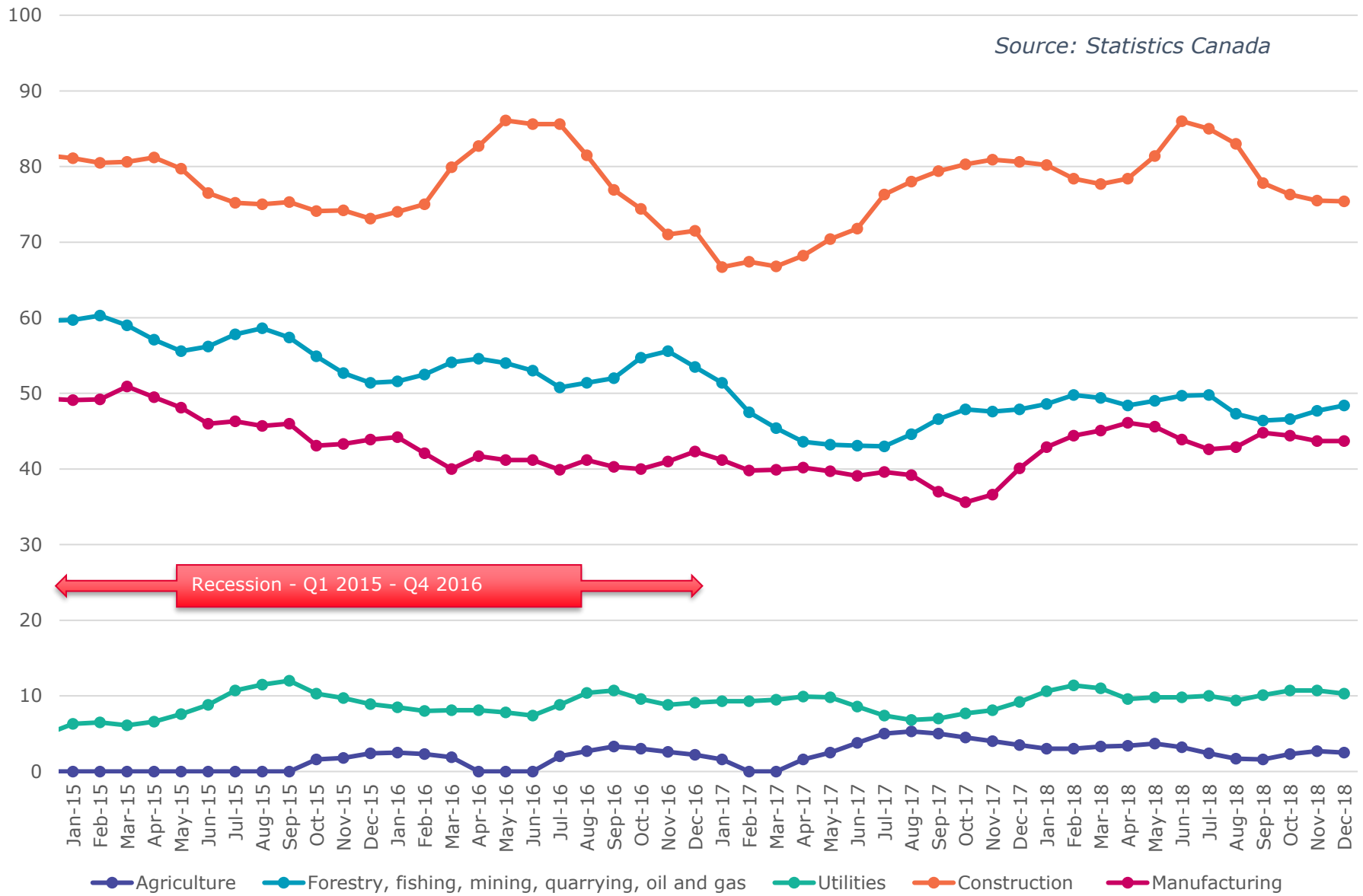
Calgary CMA Historical Unemployment Rate & Level of Employment



Source: Statistics Canada, December 2018

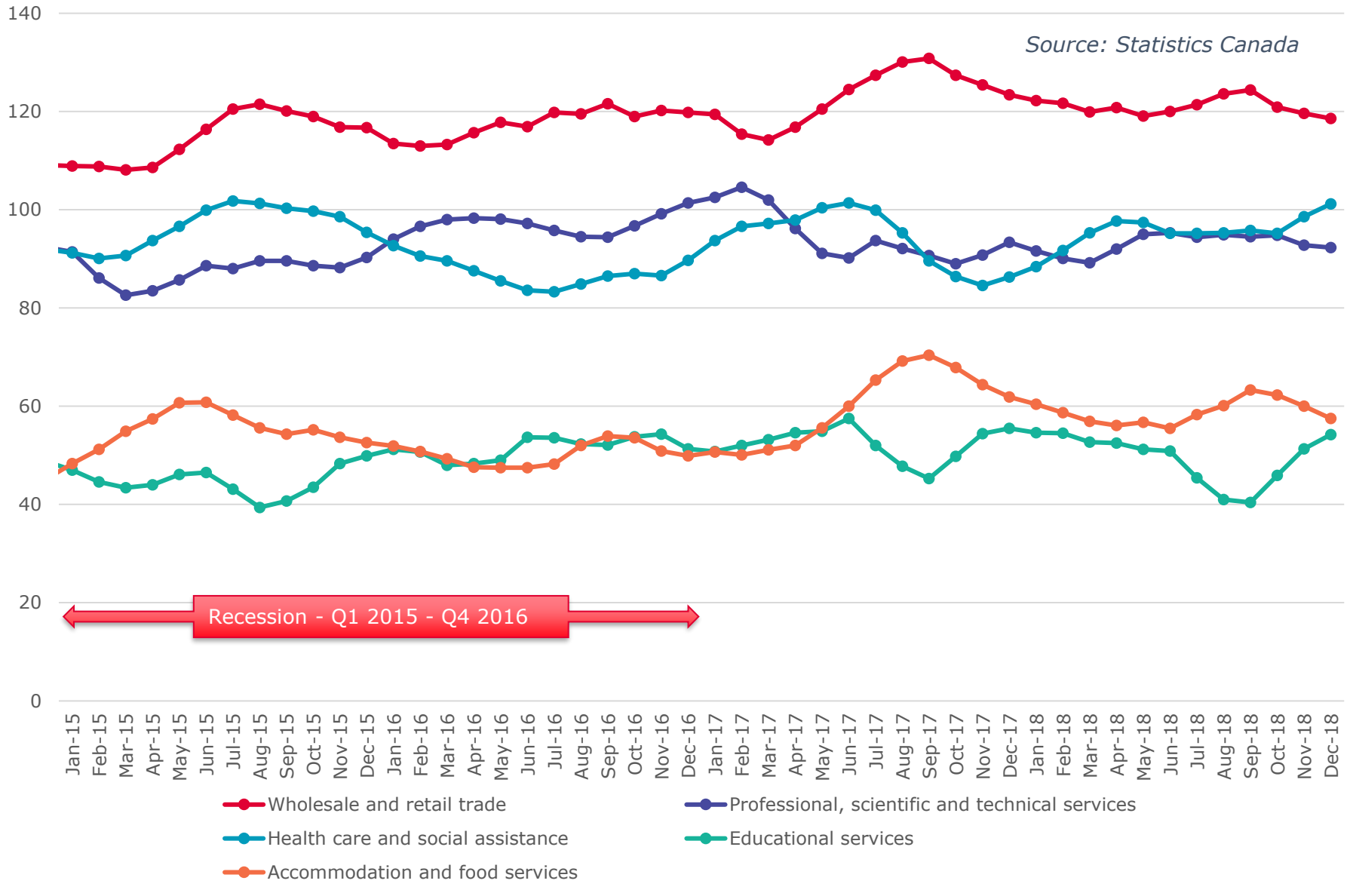
Calgary CMA Goods Producing Sectors - Number of Employees (In thousands)

Source: Statistics Canada



Calgary CMA Largest 5 Services Sector by Number of Employees (In thousands)

Source: Statistics Canada



Calgary CMA Smallest 6 Service Sectors by Number of Employees (In thousands)

